

Introducing the greatest improvement on the light bulb since Mr. Edison's original.

Light Tape®: Looks like tape, lights like neon

Light Tape® is the thinnest, brightest, lightest, longest, flexible and most durable flat plastic electroluminescent lamp in the world.

Imagine a light bulb, in any color, that you can bend around any surface, for hundreds and hundreds of feet, indoors or outdoors that costs a fraction of what traditional bulbs cost to operate. And requires absolutely no maintenance.



Light Tape's® flexibility allows it to wrap around corners, over uneven surfaces and areas previously unimaginable.



Light Tape® is a perfect replacement for neon, providing brilliant color without the operational costs and maintenance.

Sound too good to be true? We thought you'd probably think so. But Electro-LuminX, the manufacturer of Light Tape, has been building and refining this technology for over 12 years. Talking to people—just like you—who are looking for ways to make their operations more exciting, more inviting, or safer. And looking to do it in the most cost-effective manner possible.

What can Light Tape do for you? The possibilities are endless. Call us at (804) 530-8536 or visit our website at www.lighttape.com. We bet there's a Light Tape solution for your application!



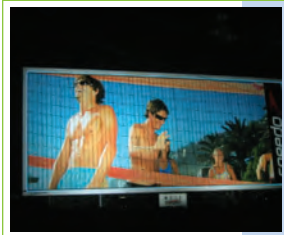
Light Tape® is available in multiple color choices

With Light Tape® the possibilities are endless. Visit our website at www.lighttape.com for more applications.

Light Tape®
by Electro-LuminX

Light Tape® Imagine the possibilities

Airports, Amusement, Architectural, Automotive, Back-Lit Keypads, Banners, Baseboards, Bars, Boats, Bus Shelters, Cars, Casinos, Cinemas, Concerts, Dance Floors, Displays, Decks, Entertainment, Evacuation, Exits, Fountains, Fun Houses, Garage Doors, Graphics, Home Theaters, Hospitals, Hotels, Industrial, Kiosks, Landscape, Marine, Menus, Military, Museums, Pathway Lighting, Patios, Residential, Restaurants, Safety, Signage, Transit, Uniforms + more.



Please contact us to find out more about LightTape products.

Virginia +1 804 530 8536
California +1 805 445 7750

www.lighttape.com

TheLightTapeTeam@lighttape.com



Key Features

Comparison to other lighting technologies

Compared to other EL technologies, Light Tape® is 2.5X brighter at the same current, and offers flexibility (bend radius of 2 mm) and rugged construction for indoor and outdoor use.

Compared to fiber optics which illuminate from only one end, Light Tape® illuminates consistently over the entire surface area.

Energy Efficiency

Light Tape® contains no glass and no gas, generates very little heat, and has operational costs 1/6 that of its nearest LED competitor—consuming less than 1/2 a watt per linear foot (per year, 300 feet, watts/ foot). Fiber optics cost 8X, neon costs 20X and fluorescent costs over 21X that of Light Tape® to operate!

Visual Attributes

- Multiple Color Choices
- FLASH! DIM! Voltage and frequency can be adjusted to vary brightness and color hue, and it's DMX compatible
- Provides uniform lighting over an area as long as 300 ft (from one power supply)
- Clean, Crisp, No-Glare Lighting, Visible for up to 5 Miles
- Penetrates through Smoke, Fog, Snow, Haze

Mechanical Attributes

- Interior and Exterior Capable
- Lighting flexible enough to curve around any mounting surface
- Superior Moisture, Temperature, UV Protection
- Rugged: Barrier Laminates Protect Against the Environment, Shock

Virtually No Maintenance

Your maintenance team will be thrilled that you've chosen Light Tape® because it typically lasts for years with virtually no maintenance. Light Tape® contains no glass, gas, or has any filaments to break.

The Light Tape® System consists of a 1) Light Tape® EL lamp, 2) SMART Drivers™ power supply, 3) interconnecting electric wires between the lamp and the power supply, and 4) channel extrusion for outdoor mounting.

Easy Installation

Light Tape® is generally shipped in rolls for easy storage and is available in widths of 0.25 to 6 inches, and lengths of up to 300 feet. Panels are also available in widths up to 24 inches.

For indoor applications, double-sided tape or Velcro can be used to mount Light Tape®. A channel extrusion or other track must be used to mount Light Tape® outside to allow for Light Tape's® expansion and contraction (Light Tape® can operate in the temperature range -40°C to 65°C)

Light Tape® is available around the globe. Please call 1 804 530 8536 for distribution in your country, or visit our website at www.lighttape.com.